

What's happening?

Brought to you by Esri Southern Africa | January 2020

AfricaGIS 2019 – Innovations in Geospatial Technologies for Achieving Sustainable Development Goals in Africa

At least 500 delegates from around the world convened in Kigali at the University of Rwanda for the 16th edition of AfricaGIS, the first of which was held in 1993.

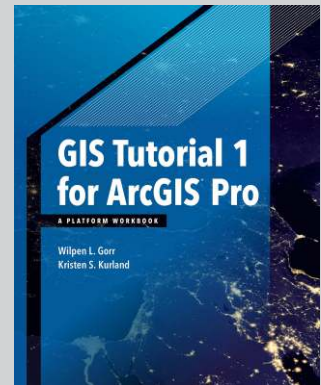
Hosted and organized by EIS-Africa and the University of Rwanda through its Centre for GIS and Remote Sensing, the conference explored the role of innovations in geospatial information and its implication in addressing the 17 SDGs targets for an inclusive, prosperous and sustainable African continent. The biennial conference contributes to the development of skills and institutional capacity across the continent.

As the platinum sponsor of the event, Esri International played a key role in addressing delegates at a pre-conference workshop and sharing expertise through presentations and live demonstrations.

The conference was officiated by Hon. Paula Ingabire the Rwanda Minister of ICT and Innovation. Speaking on the occasion, Paula noted that the conference is in line with the Government set objectives to place digital technologies and innovation as a priority but also as key drivers for economic growth. She also stated that the country understands the potential of GIS and geospatial data to strengthen land administration and management among others while supporting Government decision making.

Sives Govender, the EIS-Africa executive director, commented that the conference is about learning, collaborating, sharing and building networks for future partnership. He believes that the community of experts and scientists are the ones to provide scientific sound information to support decision making. Sives called on conference participants to use their experience and look at innovative ways to meet social economic and development challenges which will ultimately improve the lives of people.

A team of experts from the GMES and Africa programme of the African Union Commission were among some of the delegates attending. The Commission is among the leading supporters of the conference, which is in conjunction with the mandate of the Global Monitoring for the Environment and Security and Africa (GMES and Africa).



GIS Tutorial I for ArcGIS Pro:
A Platform Workbook

GIS Tutorial 1 for ArcGIS® Pro: A Platform Workbook is an introductory text for learning ArcGIS Pro, the premier professional desktop GIS application. In-depth exercises that use ArcGIS Pro, ArcGIS Online, and other ArcGIS apps feature the latest GIS technology show readers how to make maps, how to create and analyze spatial data, and how to manage systems with GIS

Wilpen L. Gorr is a professor of public policy and management information systems at the School of Public Policy and Management, H. John Heinz III College, Carnegie Mellon University, where he teaches and researches GIS applications. He is also chairman of the school's Master of Science in Public Policy and Management degree program.

Kristen S. Kurland is a professor of architecture, information systems, and public policy at Carnegie Mellon University's H. John Heinz III College and School of Architecture, where she teaches GIS, BIM, CAD, 3D visualization, and infrastructure management. Her research includes spatial analysis of health issues.

ISBN: 9781589484665

480 pages

The Esri South Africa Indianoceanica User Conference 4th & 5th September 2019, Mauritius

Esri South Africa hosted the first ever Indianoceanica user conference in Mauritius in September 2019. As part of Esri South Africa's commitment to the region, we joined forces with the University of Mauritius to host a two-day conference. Since 1994 there has been a steady increase in the use of spatial technology in the region. The past two years have seen positive growth in its use in both the public and private sectors along with a steady demand for geospatial services.

Over 100 users over the two day event took advantage of this gathering of GIS users from a variety of sectors, to learn, share experiences and gain insight into how other organisations are using GIS to simplify and improve their decision-making and to make a difference in their communities. Presentations from the Esri South Africa team as well as Esri International highlighted the availability of technology to the users.



The Southern Africa Esri User Conference, 22nd – 25th October 2019, Drakensberg

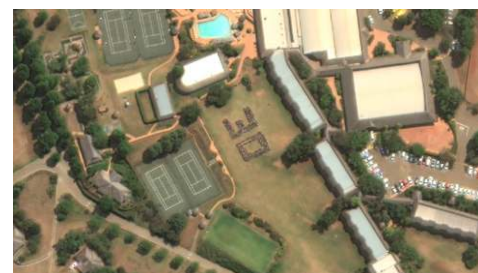


Almost six hundred delegates gathered in the Central Drakensberg from 22 to 25 October 2019 to attend the 2019 Southern Africa Esri User Conference. Esri users from all over Southern Africa and beyond attended forums, tech talks, developer sessions and training workshops where information was shared on a range of topics including asset management, connected government, solutions for local authorities and digitally transforming utilities.

Keynote speaker Aki Anastasiou shook the comfort zones of many delegates with his talk on top companies affected by digital disruption and tales of smart fridges and dustbins, robots looking after the elderly, and manipulated videos from AI-based technology DeepFake.

James Higgins, the Director of International Business Development at Esri Inc., shook those comfort zones a little more with his keynote address on how digital transformation is accelerating everything, changing our civilisation, changing how we think, reshaping our existence and rapidly changing our world. Importantly, he emphasised Esri users were already participating in this digital transformation, by sharing data, apps and geographic knowledge, geospatial professionals and technologists are participating in the evolution of GIS into a pervasive geospatial infrastructure.

The shorter informal tech talk sessions were a hit with the delegates. Sitting back in bean bags on the floor, delegates were treated to a series of innovative short talks and provided with opportunities to engage with the speakers afterwards. A variety of hands-on training workshops were also available to delegates during the conference. **Esri South Africa sub-distributors and partners from Mozambique, Zimbabwe, Botswana, Namibia, Malawi, Cameroon gathered at the conference to meet and exchange experiences – sharing in the knowledge that they are all part of the same Esri ecosystem.** The conference was also an opportunity to celebrate 30 years in business for Esri South Africa and 50 years for Esri Inc.



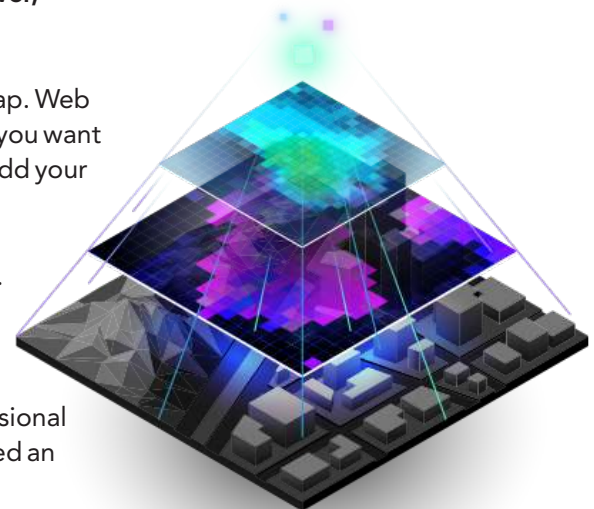
Frequently asked Questions

What is ArcGIS Online?

ArcGIS Online is a cloud-based mapping and analysis solution. Use it to make maps, analyze data, and to share and collaborate. Get access to workflow-specific apps, maps and data from around the globe, and tools for being mobile in the field. Your data and maps are stored in a secure and private infrastructure and can be configured to meet your mapping and IT requirements.

What is the coordinate system of the web maps in the ArcGIS Online Map Viewer, and can I change it?

In Map Viewer, all layers in a web map inherit the coordinate system of the basemap. Web Mercator is the coordinate system of basemaps in the default basemap gallery. If you want to use a coordinate system other than Web Mercator for your web map, you can add your own layer as a basemap directly to the map to create a custom basemap. Alternatively, an administrator can configure your organization to use a custom basemap gallery with basemaps in a coordinate system other than Web Mercator.

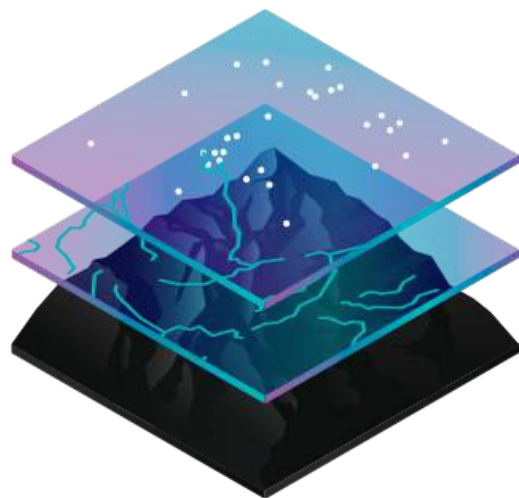


Can I get ArcGIS Pro if I don't have a license for ArcGIS Desktop?

Yes. You can get ArcGIS Pro with certain ArcGIS Online user types. The GIS Professional user type includes an ArcGIS Pro license, and the Creator user type can be assigned an ArcGIS Pro add-on license.

Can ArcGIS Pro be installed on a machine with ArcMap?

Yes, you can install ArcGIS Pro on the same machine as ArcMap and other ArcGIS Desktop applications, or on a machine without ArcMap or any other Esri products.



Can I use my maps from ArcMap in ArcGIS Pro?

Yes, map documents (.mxd), scenes (.sxd), and globes (.3DD) can be imported into ArcGIS Pro and saved in a project. The same geodatabase and shapefile datasets can be used by both applications.

Can I use my licensed ArcGIS Desktop extensions with ArcGIS Pro?

Yes. If you have an ArcGIS Desktop license for an extension product, you are licensed to use the same extension in ArcGIS Pro if it is available.

Can I run models that I build in ArcGIS Pro in ArcMap?

No, models that are built new, or opened and saved in ArcGIS Pro, cannot be used directly in ArcMap. However, you can save the containing toolbox as a previous version and use that toolbox in ArcMap.

Will models built in ArcMap work in ArcGIS Pro?

Yes, most of the time. However, if the model includes a [tool that is not available](#) in ArcGIS Pro, the model will not work. You may need to wait until that tool is available in a future release of ArcGIS Pro. Alternatively, you may be able to remove the tool and use a workaround.

General Inquiries

+27 11 238 6300

info@esri-southernafrica.com

Pricing Inquiries

Ingrid Landman

ilandman@esri-southernafrica.com

Technical Inquiries

Marius Burger

mburger@esri-southernafrica.com

Esri Southern Africa

Nautica Commercial Building
Route Royal | Black River | Mauritius